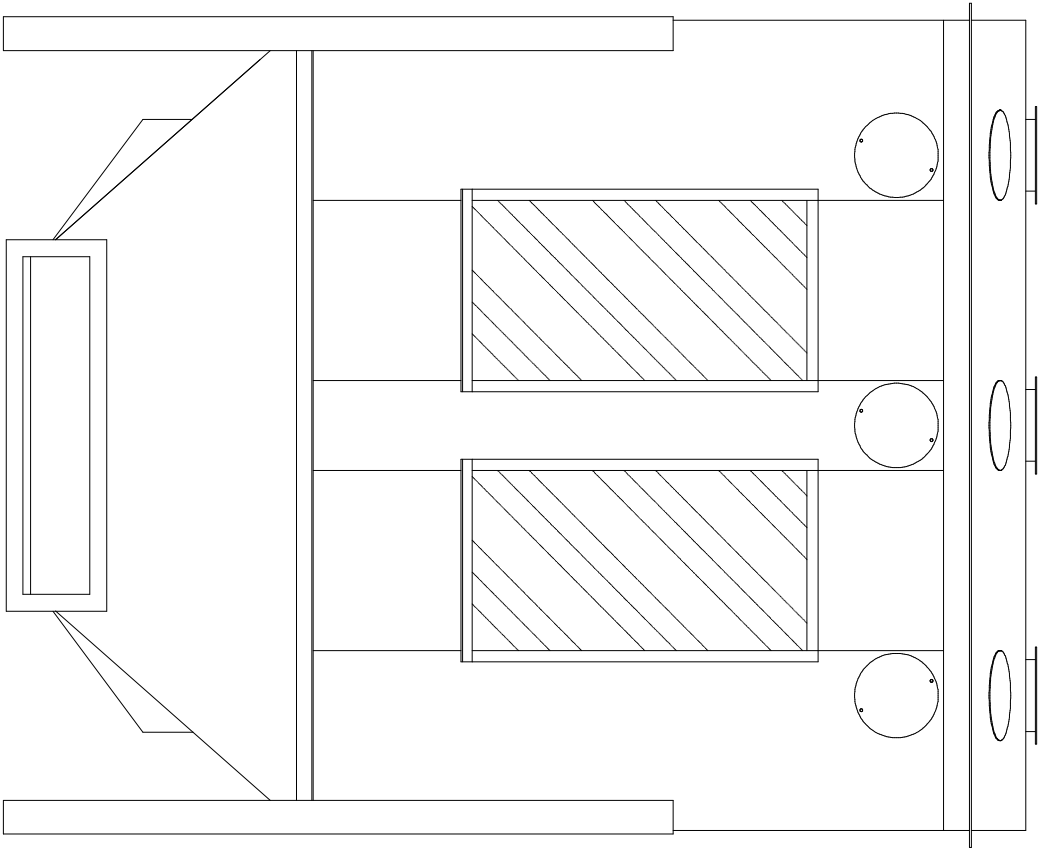
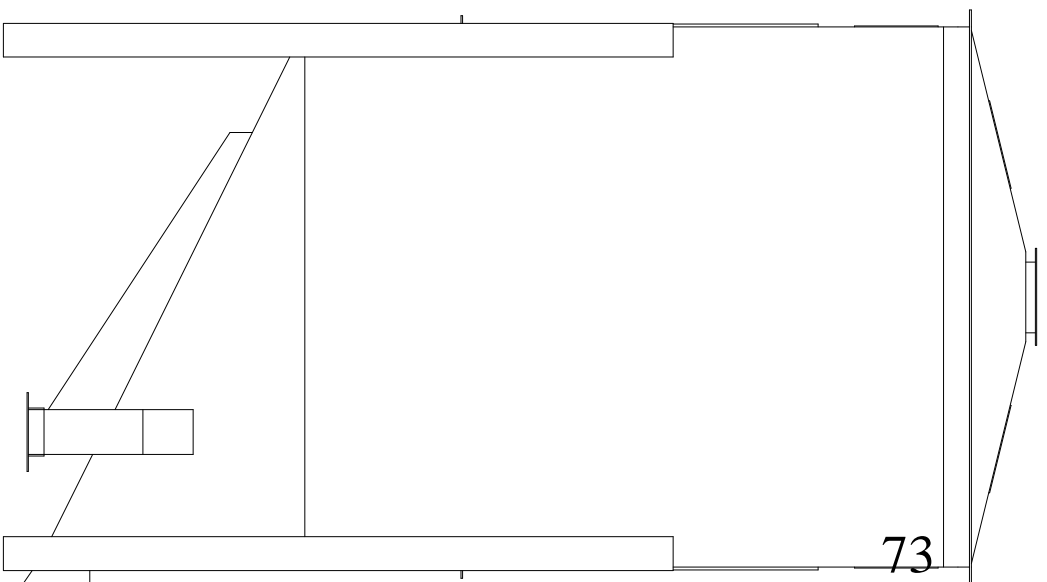


SECTION L

SIX (6) CORE
ENCLOSED SPIRAL
HT-300



HT-300

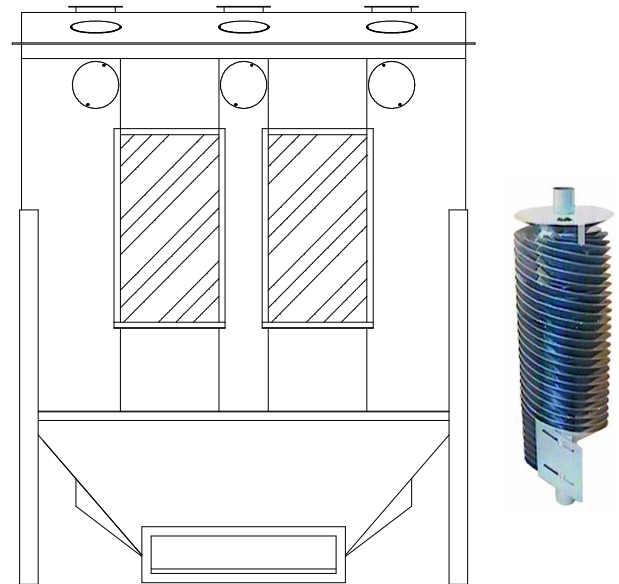




HT-300 Enclosed Spiral Separator

Completely Enclosed For

- **Dust Control**
- **Quiet Operation**
- **Compactness**
- **Ease of Handling**



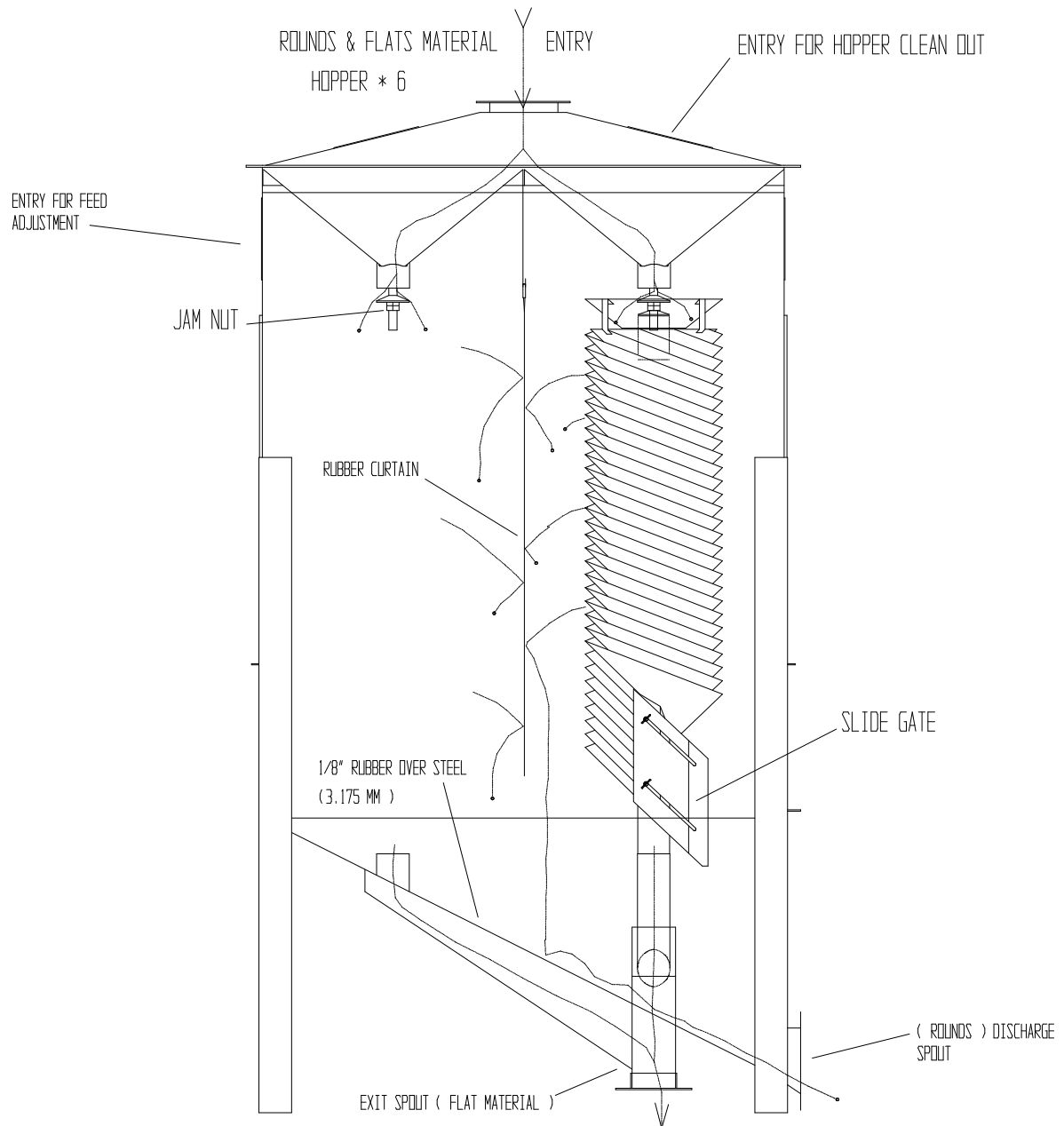
HT-300

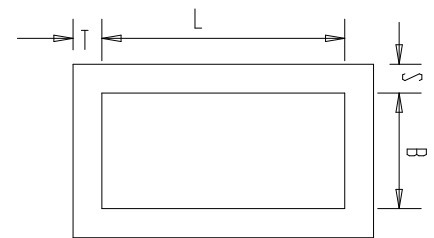
⇒ **High Capacity 300 BPH**

- ♦ Each unit contains (6) independent soldered, galvanized Spiral Core Cartridges with each having infinitely adjustable flow-control (flow control adjustable during operation)
- ♦ Integral self-cleaning hoppers
- ♦ Deflectors included for fine tuning separation
- ♦ Four (4) access doors for easy entrance to internal components
- ♦ Heavy 14 gauge body construction with rubber cushioned seed discharge points
- ♦ Legs 3/16" Flanges 1/8"
- ♦ Different pitched spiral cores offered which are easily installed
(these cores can be furnished in Galvanized metal up to 22 gauge & 24 guage Stainless)

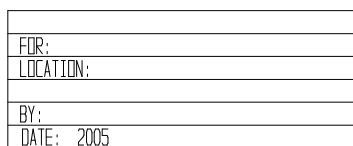
⇒ Figure based on average precleaned soybean seed but may vary depending on precleaning quality, type seed, or required quality of final product.

BASIC HT-300 BOX TYPE SPIRAL SEPARATOR (MATERIAL PATH)





	Millimeters			
	L	B	S	T
A	762	152.4	38.1	38.1
B	806.4	101.6	38.1	38.1



DATE: 2005	<i>6 CORE ENCLOSED SPIRAL</i>	Type
Issued by		STANDARD
page		HT-300
		Replaces:
		NO. 11 - A

