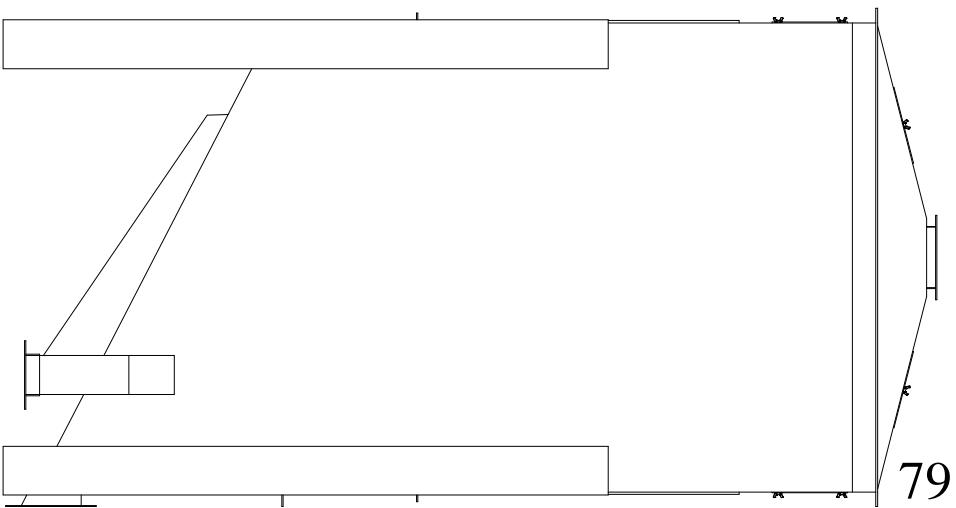
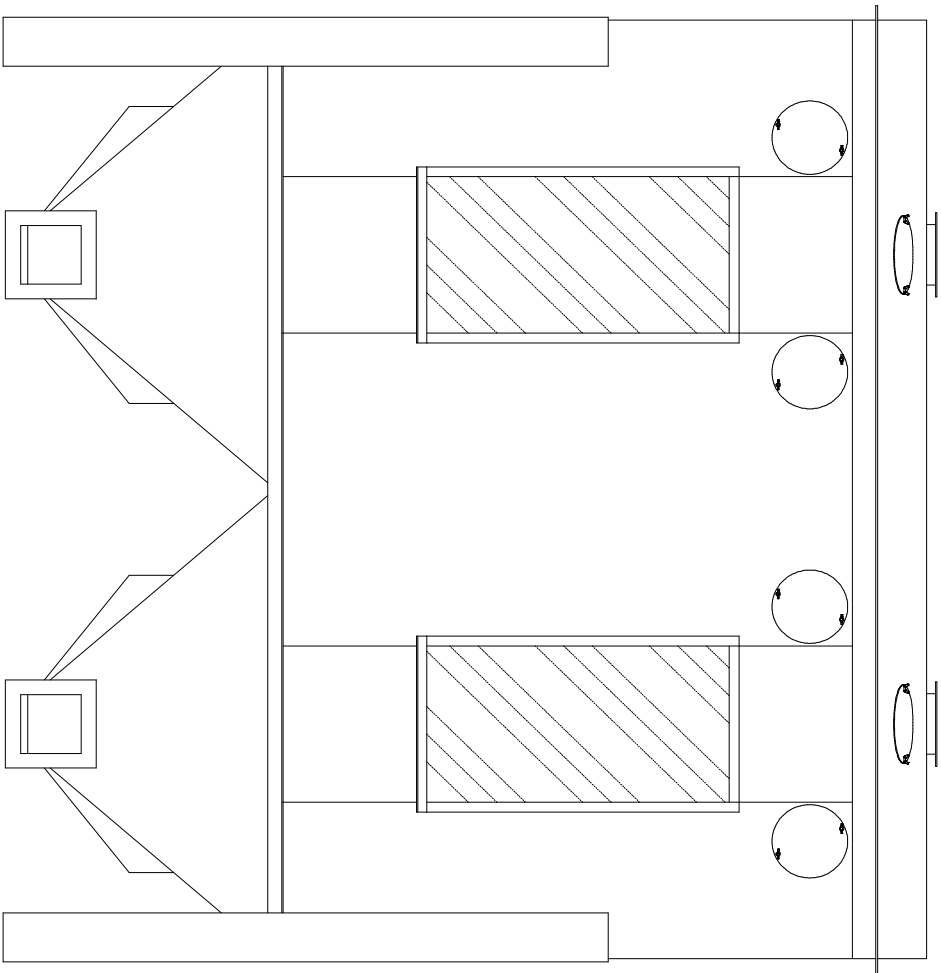


# **SECTION M**

## **EIGHT (8) CORE ENCLOSED SPIRAL HT-400**



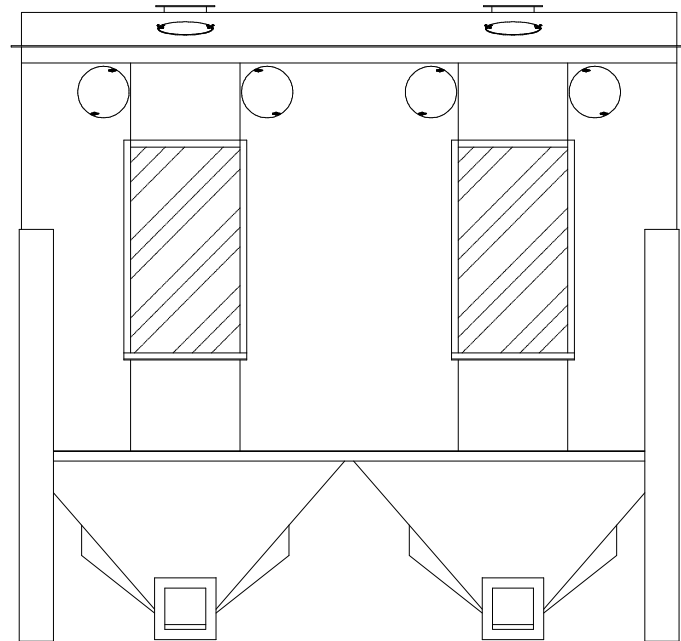
*HT-400 Low Profile - Double Bottom*



## **HT-400 Enclosed Spiral Separator**

Completely Enclosed For

- ◆ **Dust Control**
- ◆ **Quiet Operation**
- ◆ **Compactness**
- ◆ **Ease of Handling**



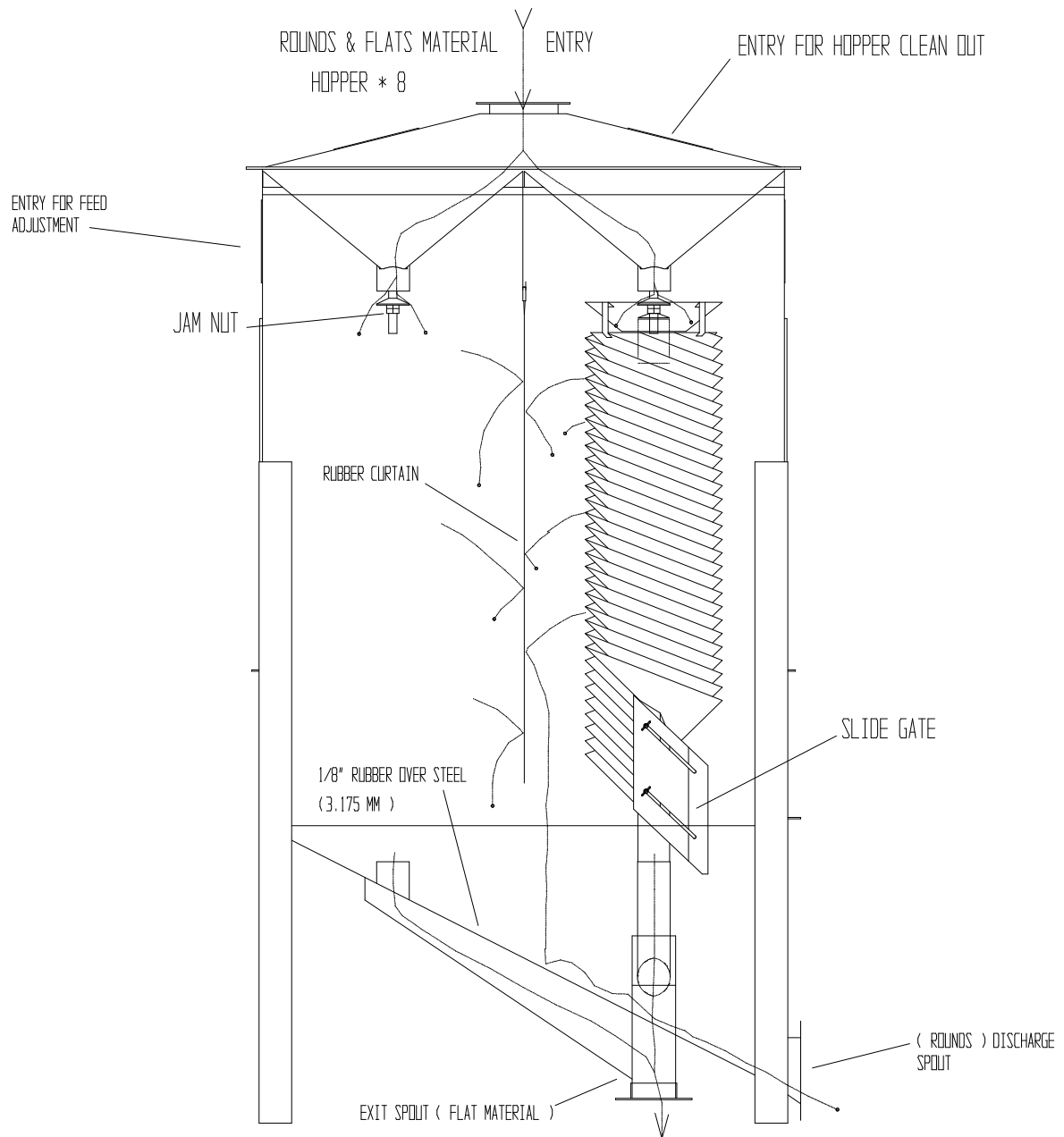
**HT-400**

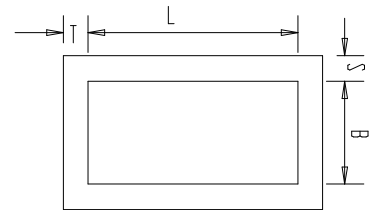
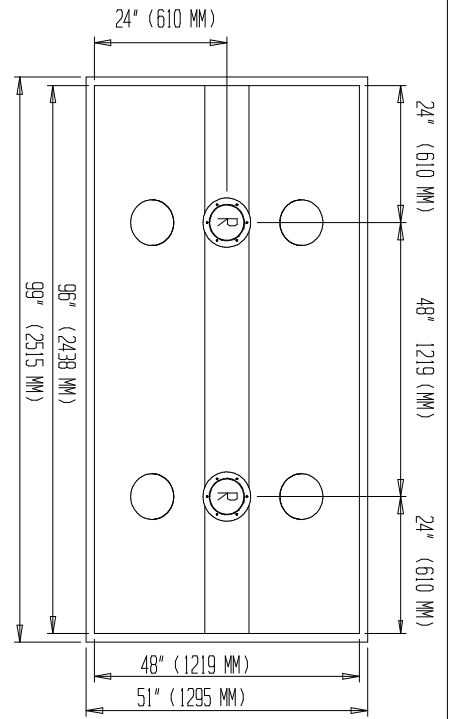
### ⇒ **High Capacity 400 BPH**

- ◆ Each unit contains (8) independent soldered, galvanized Spiral Core Cartridges with each having infinitely adjustable flow-control (flow control adjustable during operation)
- ◆ Integral self-cleaning hoppers
- ◆ Deflectors included for fine tuning separation
- ◆ Four (4) access doors for easy entrance to internal components
- ◆ Heavy 14 gauge body construction with rubber cushioned seed discharge points
- ◆ Legs 3/16" Flanges 1/8"
- ◆ Different pitched spiral cores offered which are easily installed  
(these cores can be furnished in Galvanized metal up to 22 gauge & 24 guage Stainless)

⇒ Figure based on average precleaned soybean seed but may vary depending on precleaning quality, type seed, or required quality of final product.

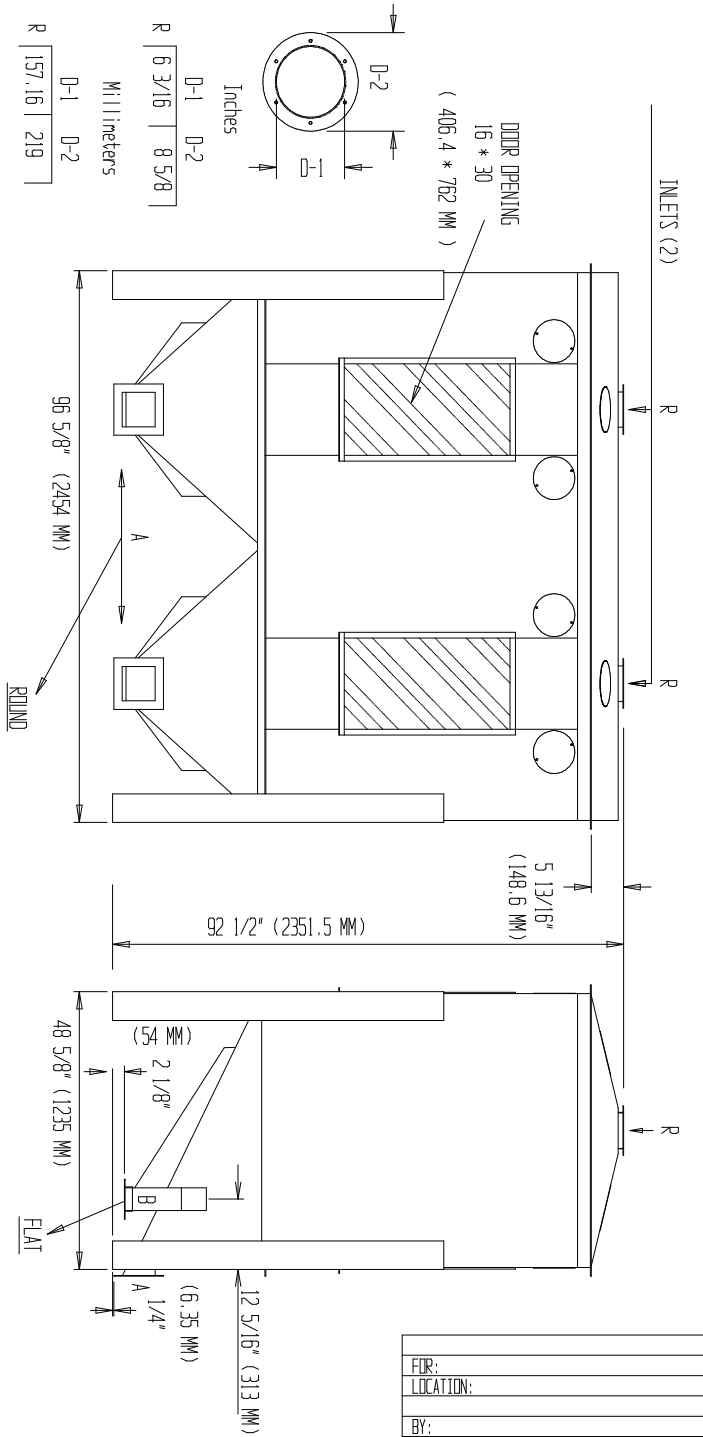
## *BASIC HT-400 BOX TYPE SPIRAL SEPARATOR (MATERIAL PATH)*





Inches				
A	L	B	S	T
6	6	1 1/2	1 1/2	1 1/2
B	7 3/4	4	1 1/2	1 1/2

Millimeters				
A	L	B	S	T
152.4	152.4	38.1	38.1	38.1
B	195.8	101.6	38.1	38.1



FOR:	
LOCATION:	
BY:	
DATE:	2007

DATE: 2007	<b>8 CORE ENCLOSED SPIRAL DOUBLE BOTTOM</b>	Type: HT-400
Issued by		
page		
	Replaces:	NO.

