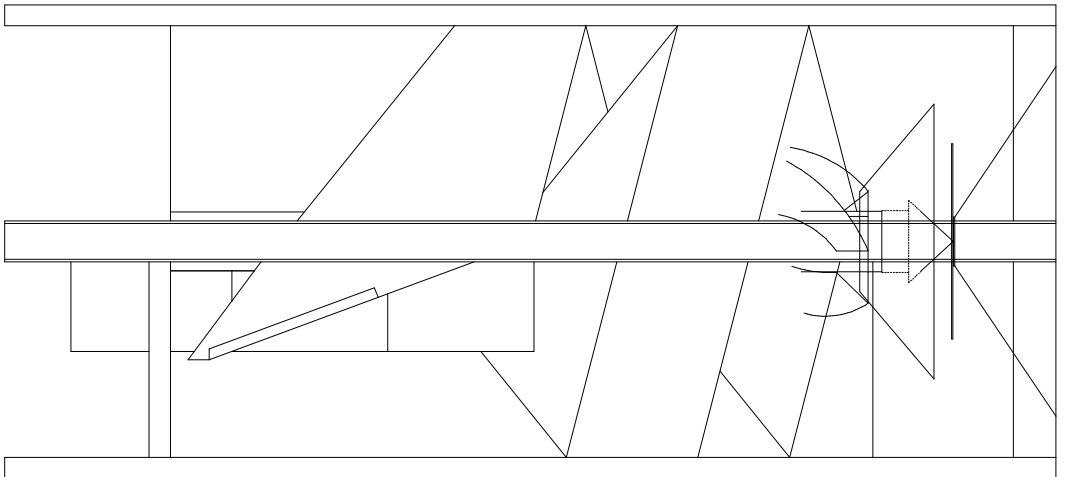
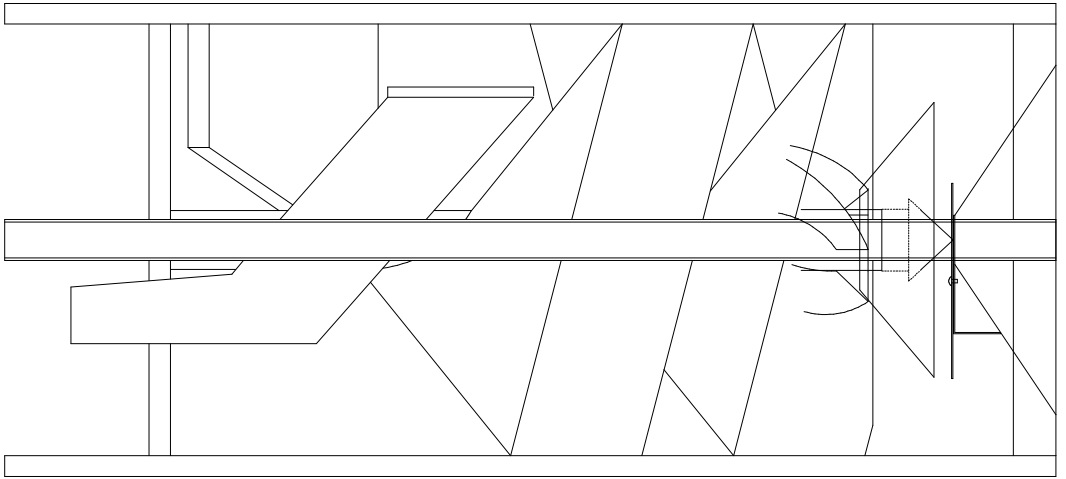


SECTION A

LAB SPIRAL HT-5



HT-5



HT-5

Single open Spiral Separator

LAB SAMPLER

- **Operates by Gravity**
- **No Power Required**

⇒ **Capacity 5 BPH**

This Separator is used for removing giant morning glory from soybeans. Removes mustard, wild peas, vetch, cockle, soybeans or any round seed from wheat, rye, barley, oats, flaxseed and other grains, screenings or seeds.

48 inches Tall



HT-5

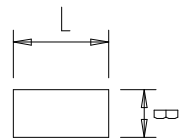
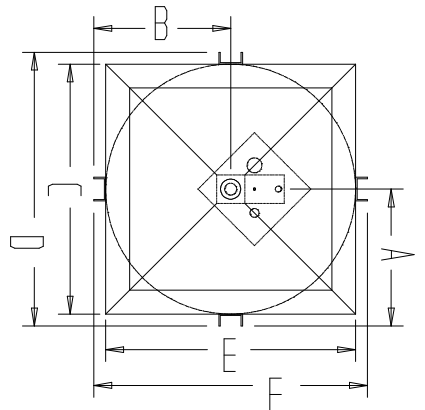
Operates by gravity . . . The Single separator contains one unit of 5 spiral flights fed from a hopper at the top. The seed leaving the hopper runs over a cone divider which spreads the feed evenly to each of the five flights in each unit. Going down the flights the round kernels travel at a much faster speed than the kernels which are not round. Their momentum increases until the round seeds run over the edge of the inner spirals, drop into the outer spiral, and discharge through a spout at the bottom side of the machine. The non-round seed remains on the small flights and slides down to a separate discharge spout at the bottom near the center of the unit.

No power required . . . Since there are no moving parts, no power is required to operate the machine. When the feed has been properly set, the separator continues to operate automatically as long as there is grain in the hopper. Constructed of galvanized non-rust iron in a strong steel frame.

Different pitched spiral core flighting can be offered.

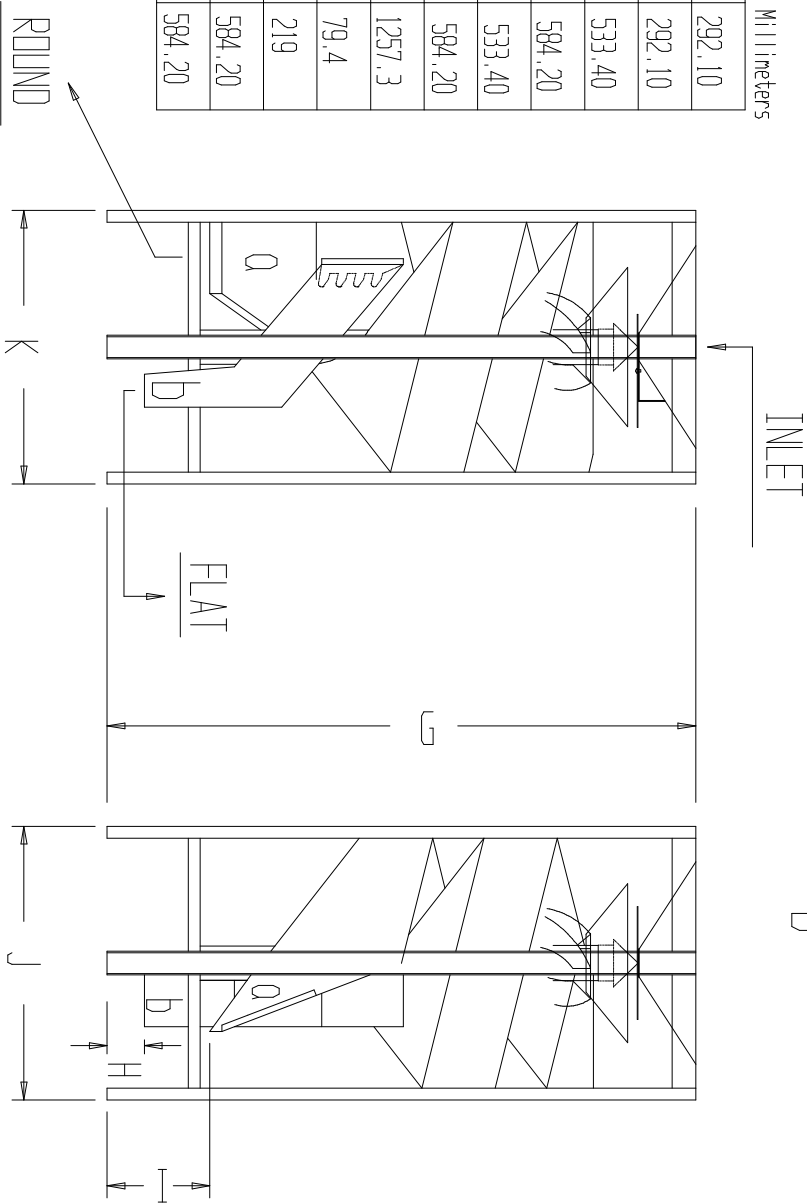
(This flighting can be furnished in Galvanized metal up to 22 guage & 26 guage Stainless)

⇒ Figure based on average precleaned soybean seed but may vary depending on precleaning quality, type seed, or required quality of final product.



Inches	
A	6
B	1
C	4 3/8
D	2 3/4
Millimeters	
A	152.40
B	25.40
C	111.12
D	70.10

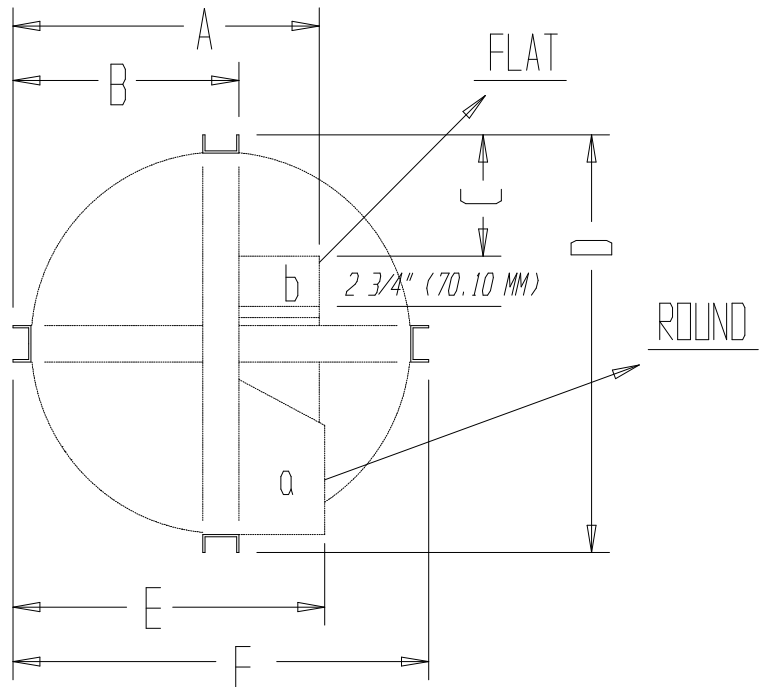
	Inches	Millimeters
A	11 1/2	292.10
B	11 1/2	292.10
C	21	533.40
D	23	584.20
E	21	533.40
F	23	584.20
G	49.5	1257.3
H	3 1/8	79.4
I	8 5/8	219
J	23	584.20
K	23	584.20



FOOT PRINT 1 - B

DATE: 2005	<i>HT-5 SPIRAL</i>	Type	
Issued by : MT		STANDARD	
page		HT-5 - < 40.3 >	
		Replaces:	NO. 1 - A

	Inches	Millimeters
A	16 15/16	430.28
B	12 1/2	317.50
C	6 3/4	170.95
D	23	584.20
E	17 1/4	438.15
F	23	584.20



TOP - FRONT - SIDE (1 - A)

			<div>HT-5</div> <div>FOOT PRINT DRAWING</div>	
				1 - B