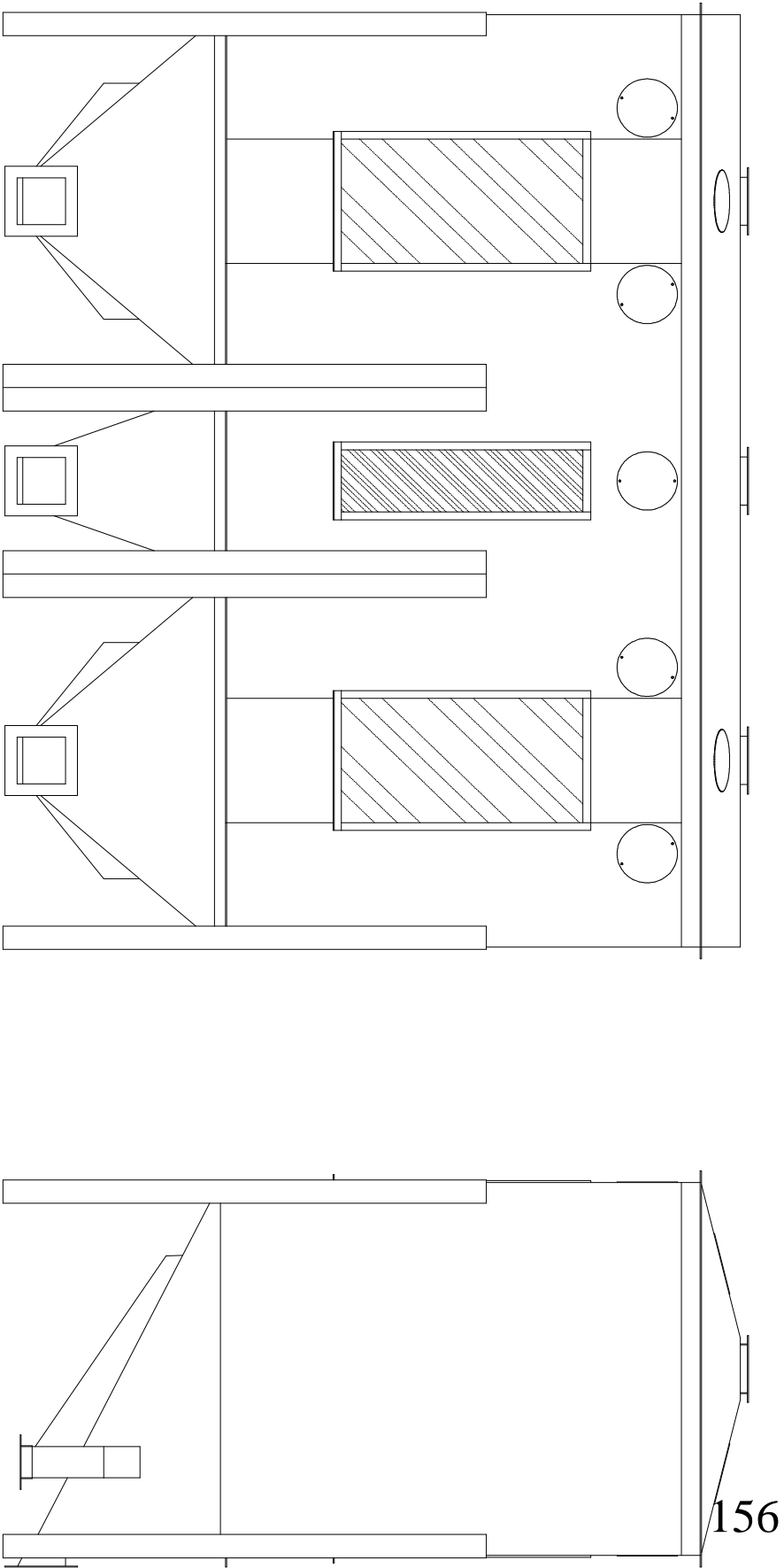


SECTION N

EIGHT (10) CORE ENCLOSED SPIRAL HT-500



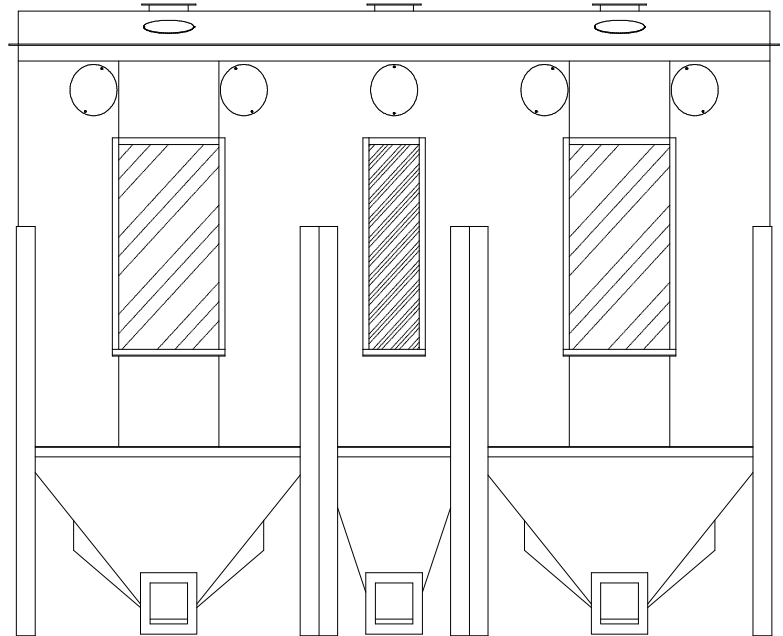
HT-500 Low Profile - Triple Bottom



HT-500 Enclosed Spiral Separator

Completely Enclosed For

- ◆ **Dust Control**
- ◆ **Quiet Operation**
- ◆ **Compactness**
- ◆ **Ease of Handling**

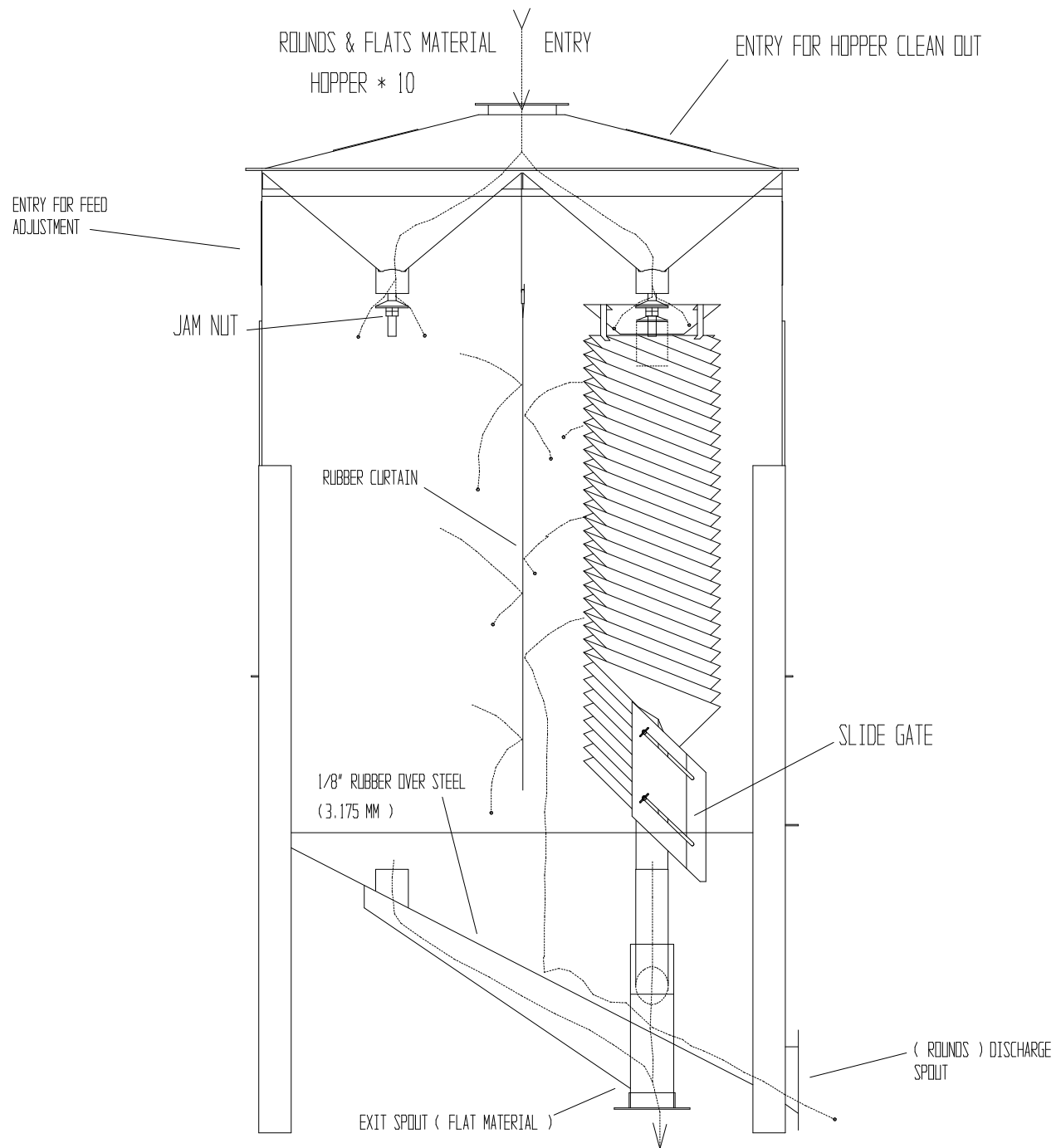


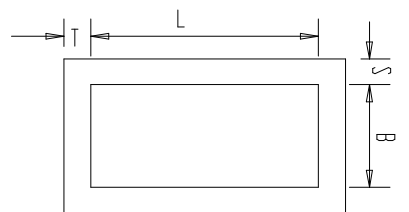
⇒ **High Capacity 500 BPH**

- ◆ Each unit contains (10) independent soldered, galvanized Spiral Core Cartridges with each having infinitely adjustable flow-control (flow control adjustable during operation)
- ◆ Integral self-cleaning hoppers
- ◆ Deflectors included for fine tuning separation
- ◆ Four (6) access doors for easy entrance to internal components
- ◆ Heavy 14 gauge body construction with rubber cushioned seed discharge points
- ◆ Legs 3/16" Flanges 1/8"
- ◆ Different pitched spiral cores offered which are easily installed
(these cores can be furnished in Galvanized metal up to 22 gauge & 24 gauge Stainless)

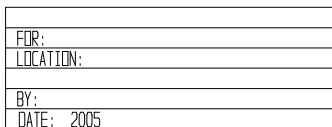
⇒ Figure based on average precleaned soybean seed but may vary depending on precleaning quality, type seed, or required quality of final product.

BASIC HT-500 BOX TYPE SPIRAL SEPARATOR (MATERIAL PATH)





	Millimeters			
	L	B	S	T
A	152.4	152.4	38.1	38.1
B	195.8	101.6	38.1	38.1



DATE:	<i>10 CORE ENCLOSED SPIRAL</i>	Type:	
Issued by		HT-500	
page			
		Replaces:	NO.

