

**8 CORE
ENCLOSED
“SPIRAL”
SEPARATOR**

**HT - 400
MAGIC BOX**

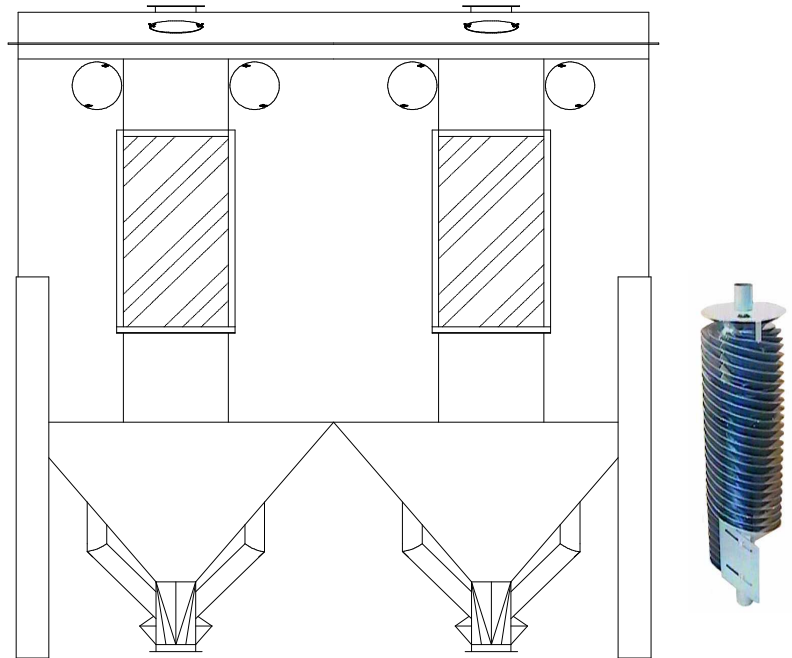


HT-400 MAGIC BOX

Enclosed Spiral Separator

Completely Enclosed For

- ◆ **Dust Control**
- ◆ **Quiet Operation**
- ◆ **Compactness**
- ◆ **Ease of Handling**

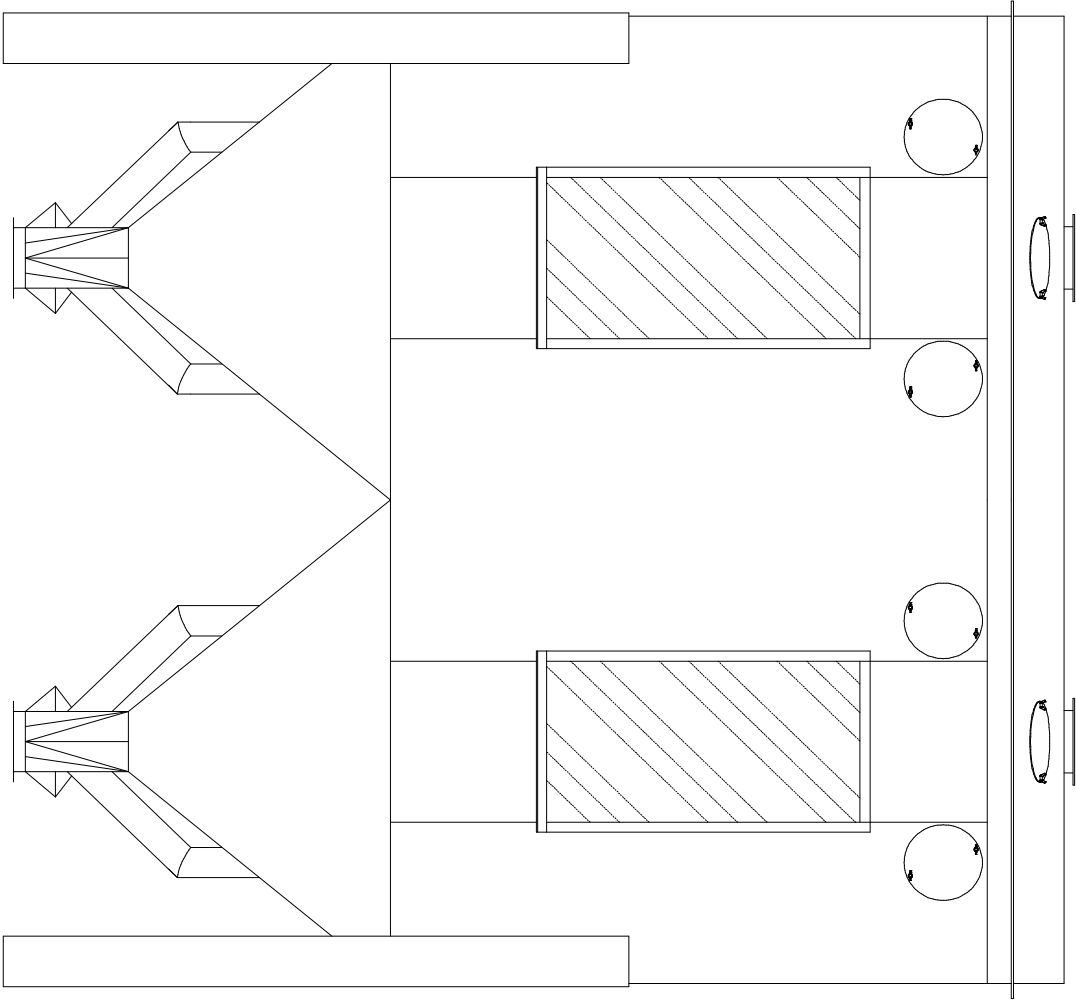


HT-400 MAGIC BOX

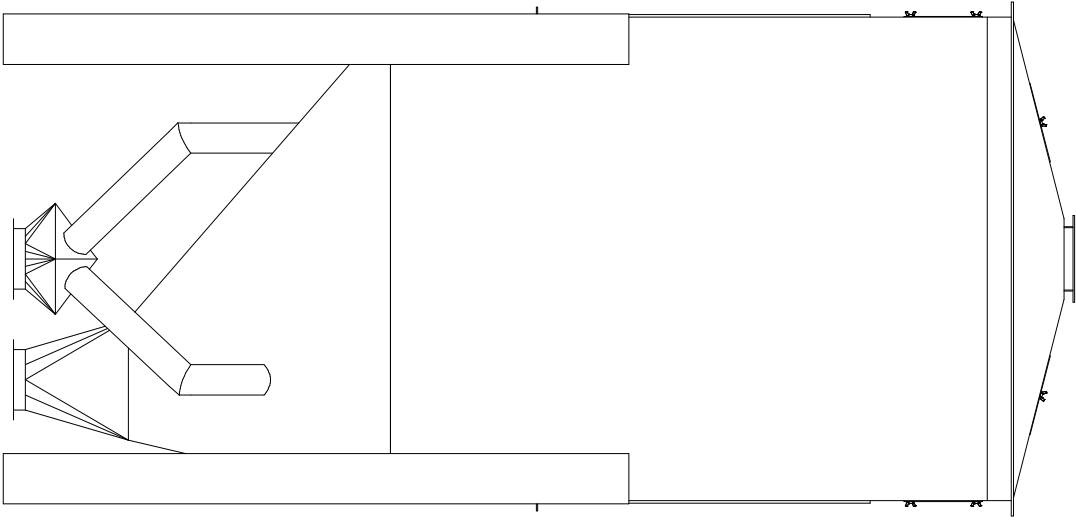
⇒ **High Capacity 400 BPH**

- ◆ Each unit contains (8) independent soldered, galvanized Spiral Core Cartridges with each having infinitely adjustable flow-control (flow control adjustable during operation)
- ◆ Integral self-cleaning hoppers
- ◆ Deflectors included for fine tuning separation
- ◆ Four (4) access doors for easy entrance to internal components
- ◆ Heavy 14 -16 gauge body construction with rubber cushioned seed discharge points
- ◆ Legs 3/16" Flanges 1/8"
- ◆ Different pitched spiral cores offered which are easily installed
(these cores can be furnished in Galvanized metal up to 22 gauge & 26 gauge Stainless)

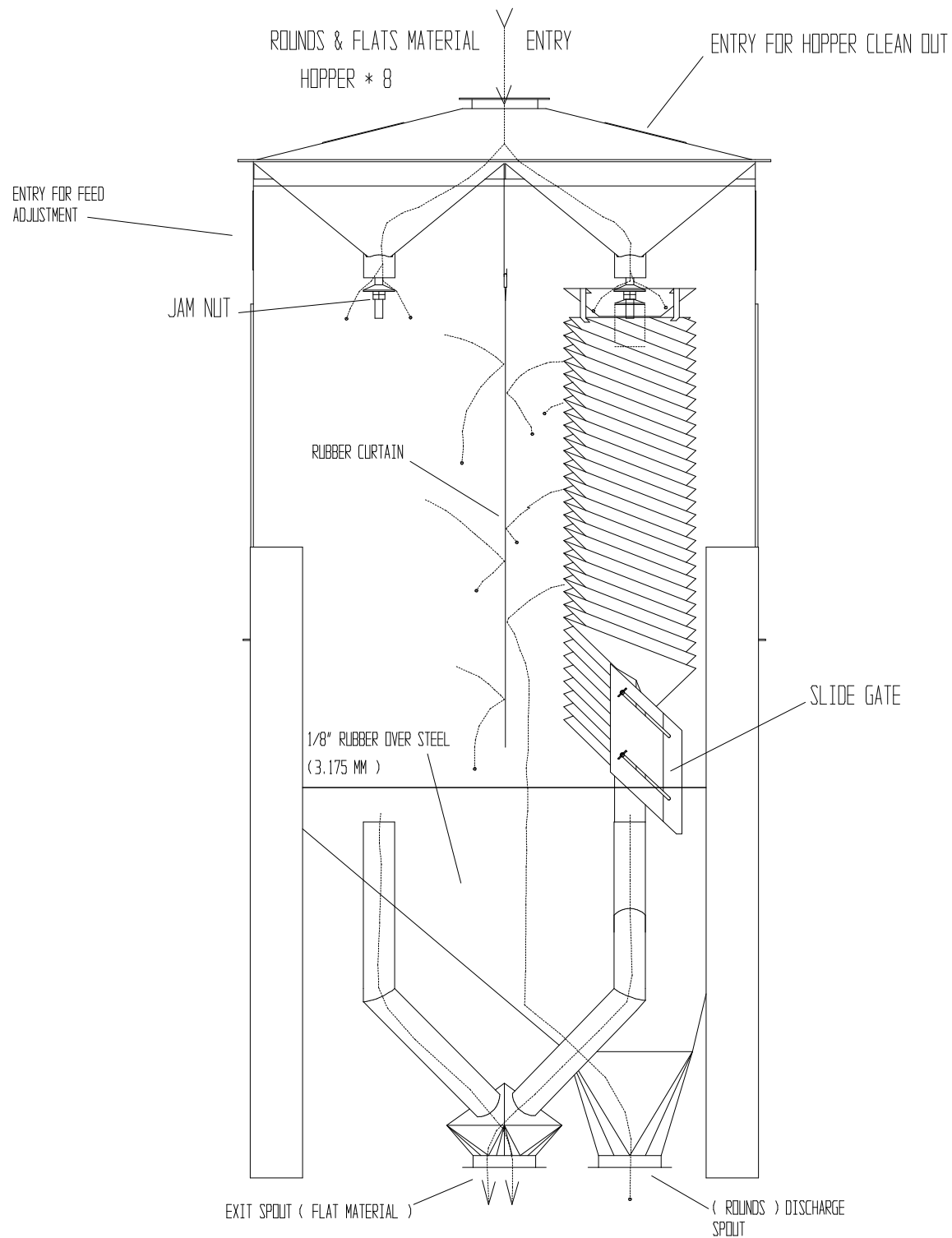
⇒ Figure based on average precleaned soybean seed but may vary depending on precleaning quality, type seed, or required quality of final product.

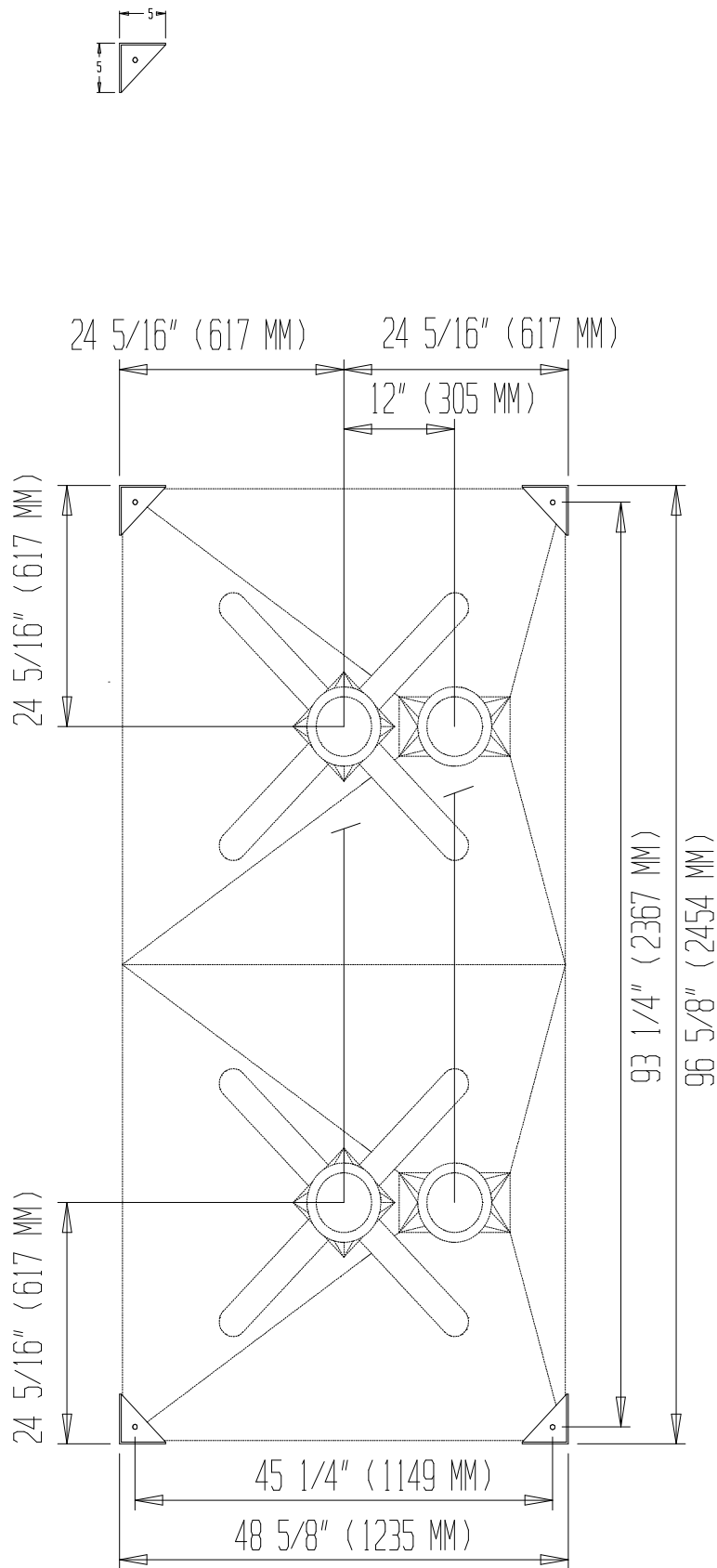


HT400 MAGIC BOX



BASIC HT-400 MAGIC BOX TYPE SPIRAL SEPARATOR (MATERIAL PATH)





TOP - FRONT - SIDE (108-A)

[illegible]