

SECTION G

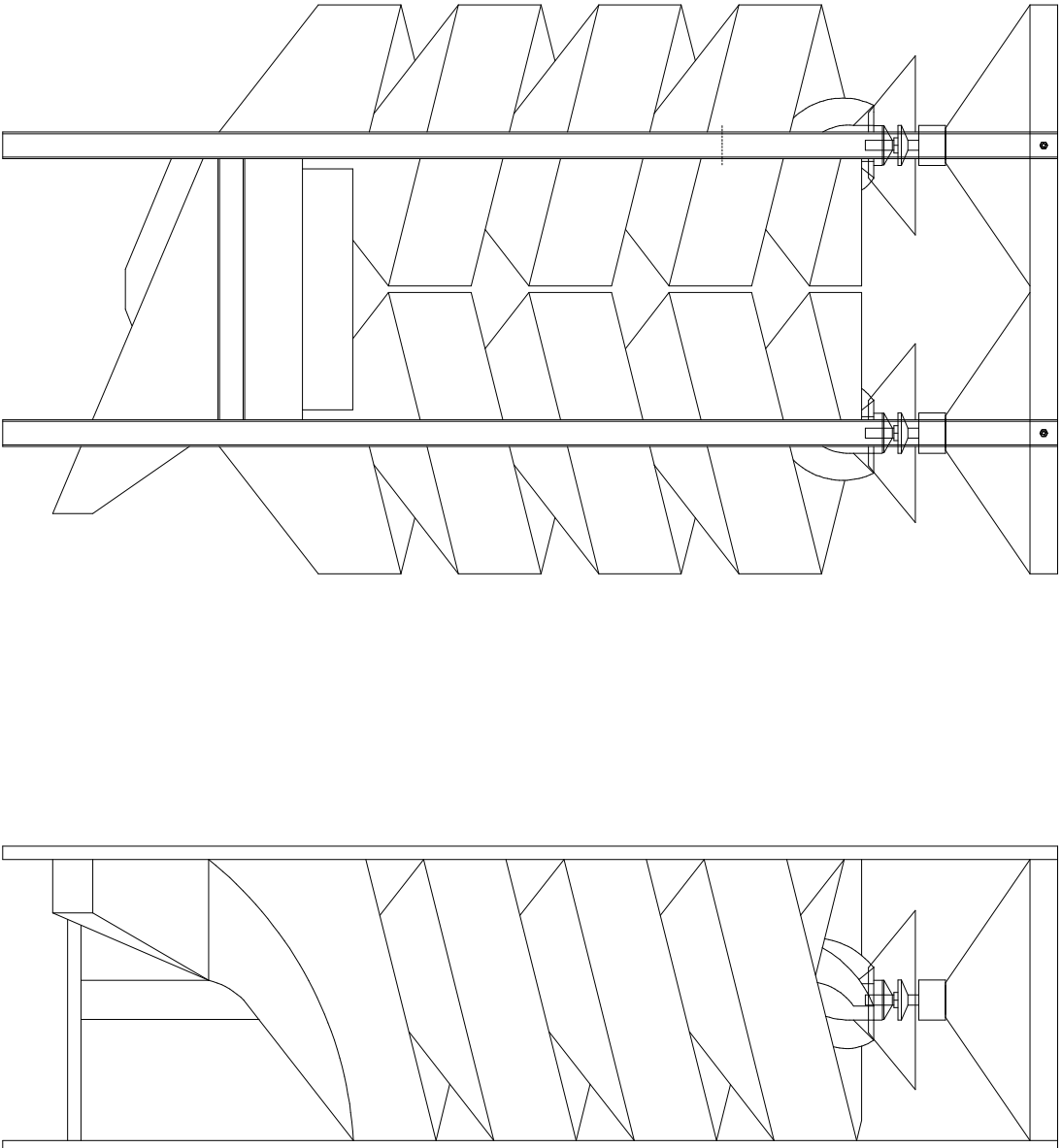
TWO (2) CORE, DOUBLE OPEN HT-50 STANDARD

“ H E A V Y D U T Y ”
(Steel Shot & Abrasives)

Flighting Thickness: 26 to 22 ga
Galvanize or Stainless

Flighting Widths can be :
3 - 3.5 - 4 - 4.5 - 5 - 5.5 - 6 - 6.5

With Heavy Duty
16 - 14 ga. Hoppers - Self Cleaning
“ Lined Spouting ”



HT-50 with "Heavy Duty Hopper & Solid Steel Flow Control"



HT-50

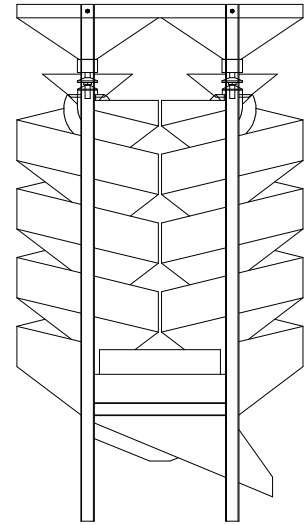
Double open Spiral Separator Extra Heavy Duty

- **Operates by Gravity**
- **No Power Required**

⇒ **Capacity 50 BPH - Soy**

: This unit can be used in Abrasives :

This Separator is used for removing giant morning glory from soybeans. Removes mustard, wild peas, vetch, cockle, soybeans or any round seed from wheat, rye, barley, oats, flaxseed and other grains, screenings or seeds.



**HT-50
Extra Heavy Duty**

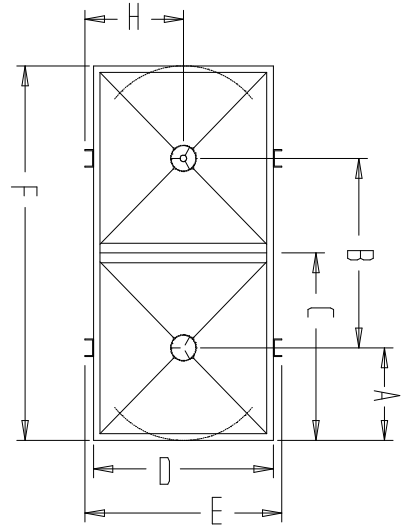
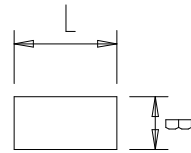
Operates by gravity . . . The Double separator contains two units of spirals fed from a large hopper at the top, with an adjustable feed plate for each unit. The seed leaving the hopper runs over a cone divider which spreads the feed evenly to each of the five flights in each unit. Going down the flights the round kernels travel at a much faster speed than the kernels which are not round. Their momentum increases until the round seeds run over the edge of the inner spirals, drop into the outer spiral, and discharge through a spout at the bottom side of the machine. The non-round seed remains on the small flights and slides down to a separate discharge spout at the bottom center of the unit.

No power required . . . Since there are no moving parts, no power is required to operate the machine. When the feed has been properly set, the separator continues to operate automatically as long as there is grain in the hopper. Constructed of galvanized non-rust iron in a strong steel frame. Different pitched spiral core flighting can be offered.

- This flighting can be furnished in Galvanized metal up to 22 guage & 20 guage Stainless -
Flighting Widths - 3, 3.5, 4, 4.5, 5, 5.5, 6, 6.5

(Hopper - 14 ga with Solid Steel Flow Control & Inserts for More Precise Flow Adjustment)

⇒ Figure based on average precleaned soybean seed but may vary depending on precleaning quality, type seed, or required quality of final product.

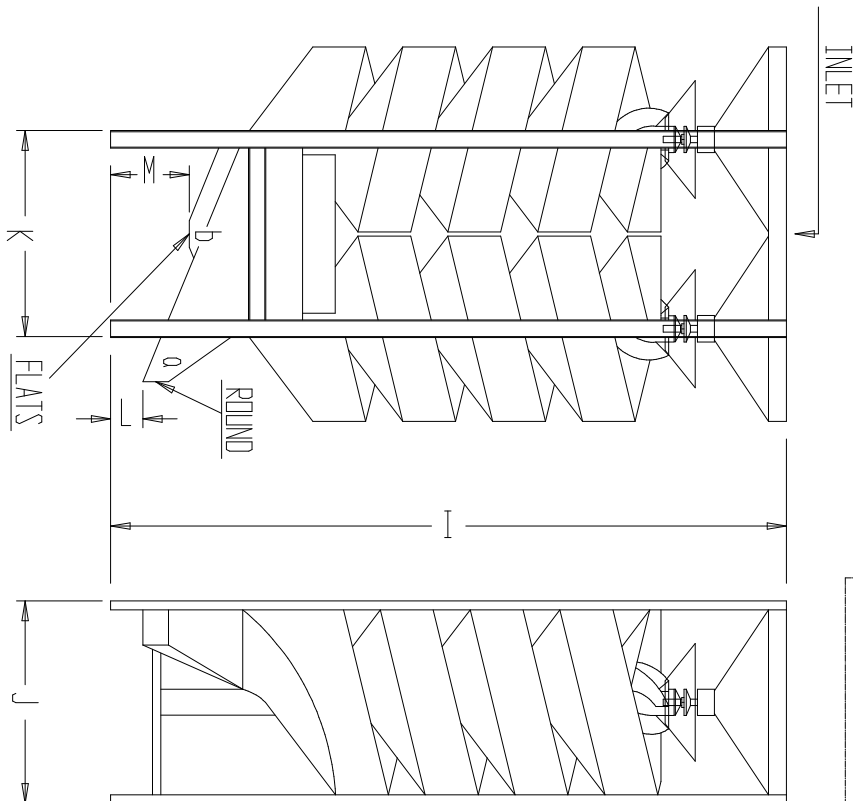


HEAVY DUTY
FEED SYSTEM

FOOT PRINT 7 - B

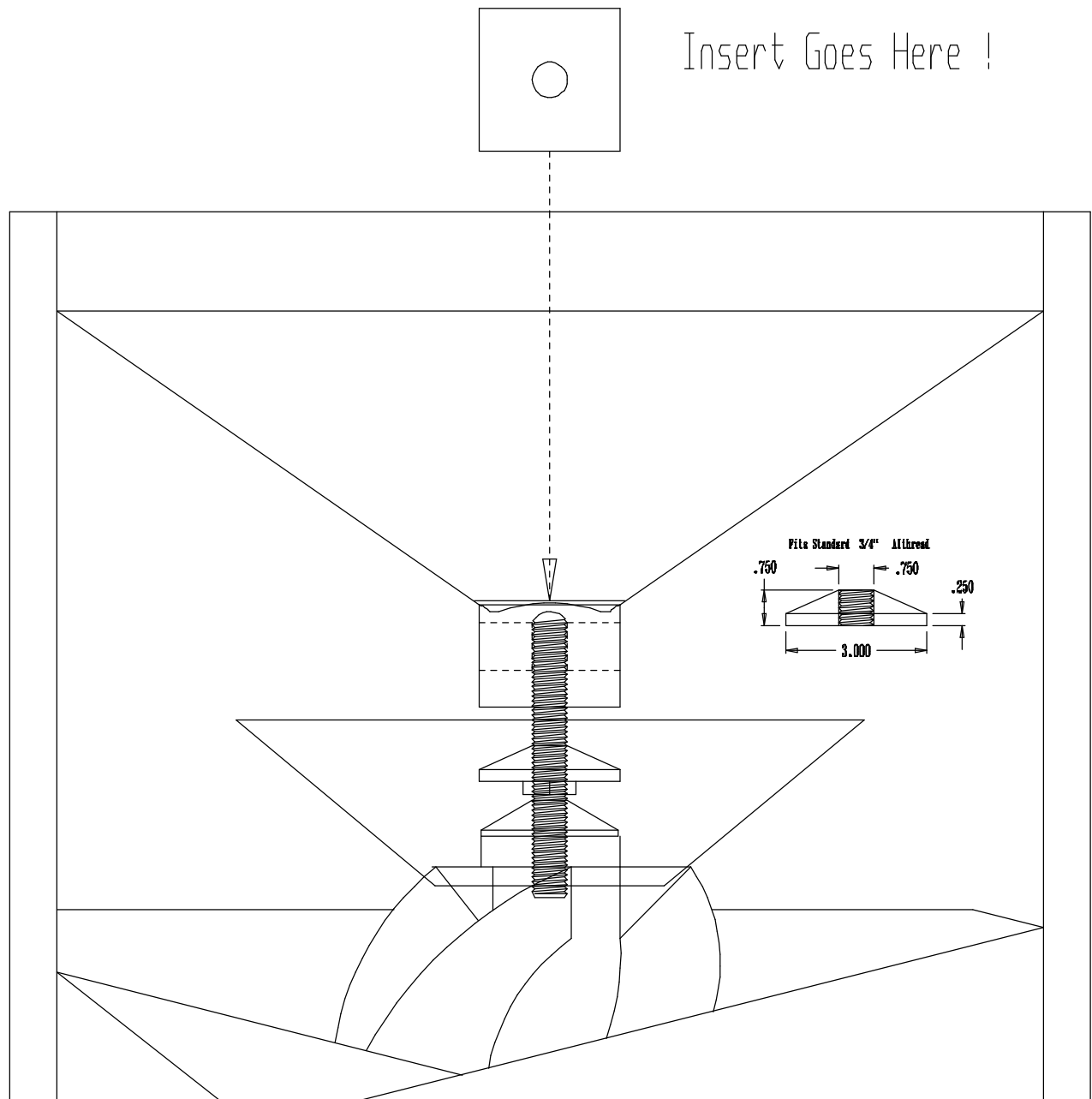
Inches	
A	L
B	B
Millimeters	
a	l
b	B
Inches	
A	L
B	B
Millimeters	
a	l
b	B

Inches	
A	10 1/2
B	21 1/2
C	21 1/4
D	21
E	23
F	42 1/2
G	
H	11 1/2
I	79
J	23
K	23 1/2
L	3 3/4
M	9 3/16
Millimeters	
A	266.7
B	546.10
C	539.75
D	533.40
E	584.20
F	1079.50
G	
H	292.10
I	2006.60
J	584.20
K	596.90
L	95.26
M	233.36

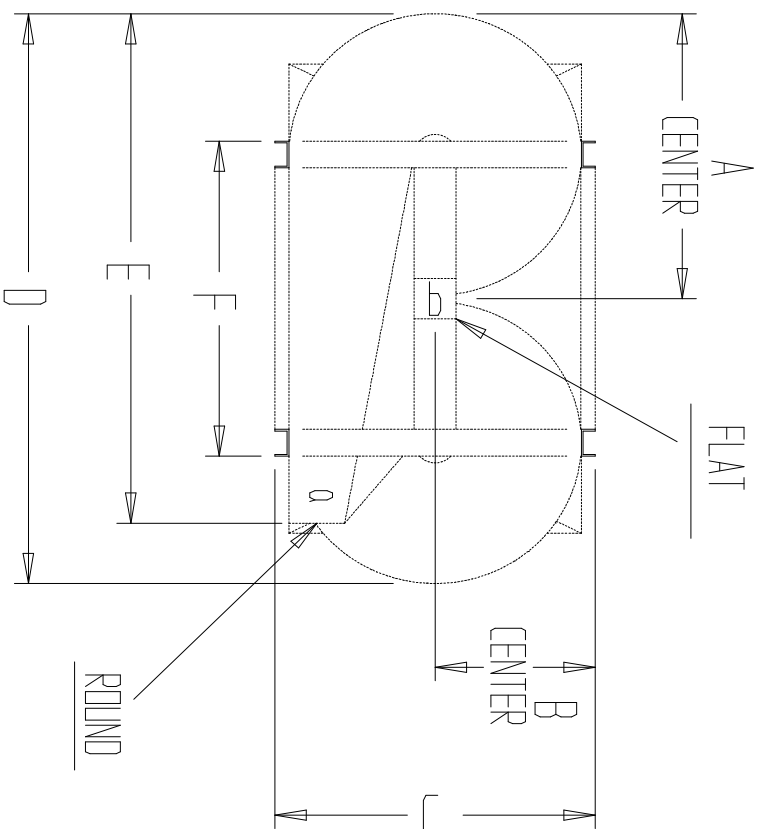


DATE:	<i>2 CORE " OPEN " SPIRAL</i> With " Heavy Duty Hopper "	Type
Issued by		STANDARD
page		HT-50
Replaces:		NO. 7-A

HEAVY DUTY FLOW CONTROL



	Inches	Millimeters
A	21 1/4	539.75
B	11 1/2	292.10
C	23	584.20
D	42 1/2	1079.50
E	38	965.20
F	23 1/2	596.90

[illegible]